

# The Importance of Temperature Control in Capillary Electrophoresis of Carbohydrates

## Introducing Temperature Gradient Capillary Electrophoresis

Andras Guttman,<sup>1</sup> Marton Szigeti<sup>2</sup> and Jeff Chapman<sup>1</sup>

<sup>1</sup> SCIEX Separations, Brea, CA

<sup>2</sup> Horváth Csaba Laboratory of Bioseparation Sciences, University of Debrecen, Hungary

## Overview

**Who Should Read This:** Senior Scientists, Lab Directors in Biopharma

**Focus:** We introduce temperature gradient capillary electrophoresis to enhance the selectivity of complex carbohydrates using the PA 800 Plus Pharmaceutical Analysis System with the Fast Glycan Sample Preparation and Analysis Kit.

**Goal:** To fine tune the separation selectivities of closely migrating carbohydrate species of high CQA importance.

**Problem:** The activation energy requirement of carbohydrates during the electromigration process is separation temperature dependent.

**Results:** Understanding the phenomena of temperature dependent differential migration shifts of branched N-glycan subtypes in capillary electrophoresis allowed fine-tuning of the resolving power between carbohydrate structures of CQA importance. Closely migrating N-glycan structure pairs showed resolution maximums at different temperatures, suggesting the temperature gradient method as an easy and fast way to find out their optimal separation temperature.

## Key Challenges:

Separation selectivities of carbohydrates are highly temperature dependent.

## Key Features:

The precise temperature control of the PA 800 Plus Pharmaceutical Analysis System provides proper conditions for optimized analysis of complex carbohydrates.



The PA 800 Plus Pharmaceutical Analysis System

## Introduction

The general assumption in capillary electrophoresis (CE) is that elevated temperature adversely affects peak resolution, due to the increased diffusion rate of the migrating analyte molecules. However, it has been recently reported that the activation energy requirement of the electromigration process is separation temperature dependent, therefore, the temperature parameter can be utilized in resolution manipulation.<sup>1</sup> Here we discuss the temperature effect on separation selectivities in CE between high mannose and complex type branched N-glycans on a fusion protein of high biotherapeutic interest, etanercept (Enbrel®). PNGase F released glycans were aminopyrene trisulfonate labeled and separated in the temperature range of 15° C to 45° C in 5° C intervals by capillary electrophoresis with laser induced fluorescent detection. It was found that within this temperature range the separation selectivities were highly carbohydrate structure dependent.<sup>2</sup> Structural assignment of the released N-glycans was implemented by utilizing the three internal standard based automated GU value calculation features<sup>3</sup> of the Fast Glycan Labeling and Analysis Kit and the built in database.

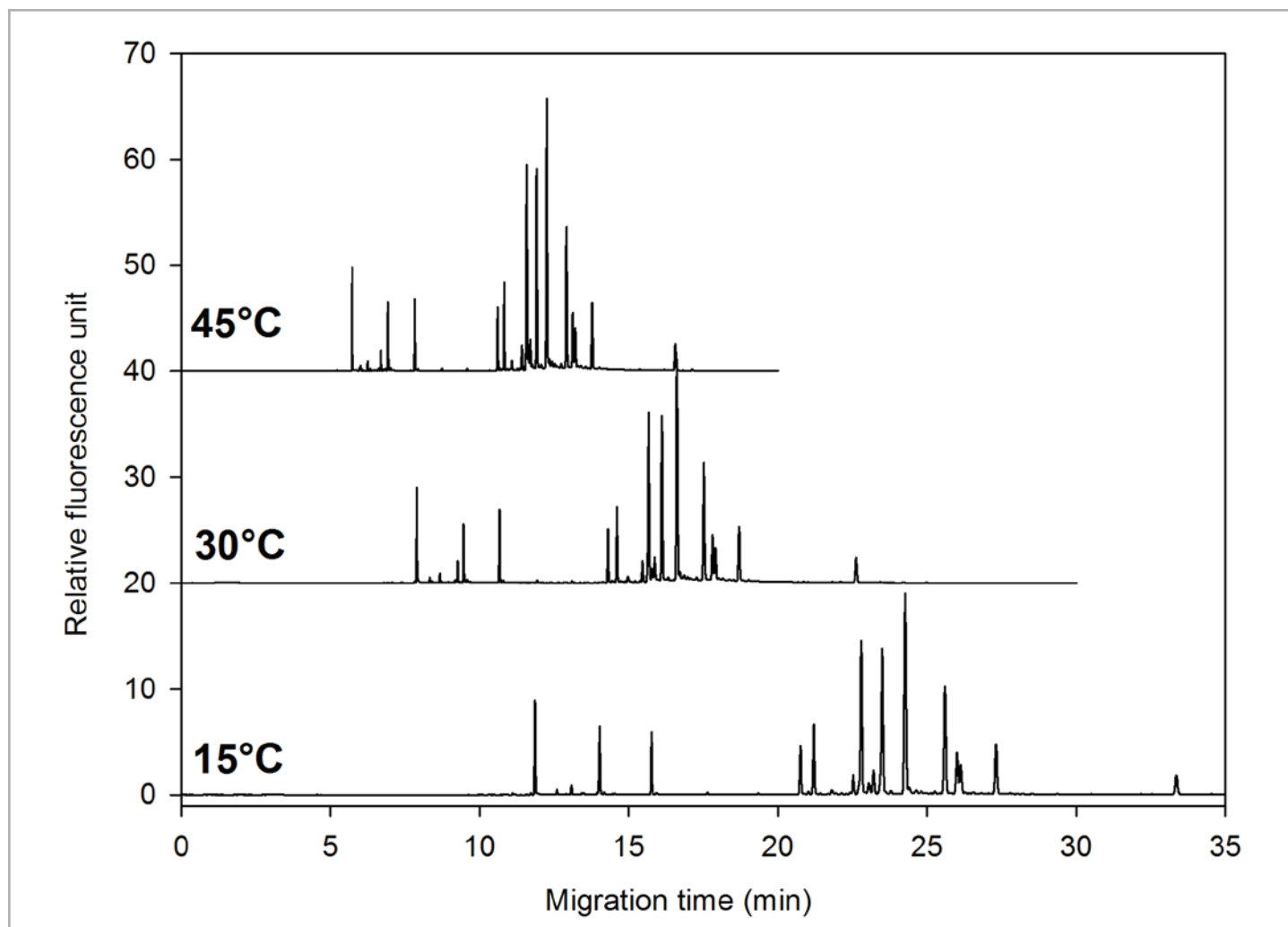
## Materials and Methods

A PA 800 Plus Pharmaceutical Analysis System was used for all capillary electrophoresis analyses (SCIEX, Brea, CA) equipped with a solid state laser based fluorescent detector ( $\lambda_{\text{ex}}=488 \text{ nm}$ / $\lambda_{\text{em}}=520 \text{ nm}$ ). The separations were accomplished in 50 cm effective length (50  $\mu\text{m}$  I.D.) bare fused silica capillary columns in the temperature range of 15° C to 45° C at every 5° C with  $\pm 0.1^\circ \text{C}$  precision. All runs were done in triplicates. The Fast Glycan Sample Preparation and Analysis kit was used for sample preparation and analysis and the 32Karat, version 10.1 software package for data acquisition (both from Sciex). The etanercept (Enbrel®) was a kind gift of the Medical School of University of Debrecen. All other chemicals were from Sigma Aldrich (St Louis, MO).

## Results and Discussion

First, the temperature dependent electrophoretic mobilities of the APTS labeled etanercept glycans were investigated in the range of 15 - 45° C in 5° C intervals. Figure 1 compares the resulting electropherograms at these temperatures, normalized to the lower (DP2) and higher (DP15) bracketing standards as sample window. While the migration times of all oligosaccharides decreased with the increasing temperature, alterations were found in the relative migration time differences between some of the glycans.

Figure 2 delineates the CE-LIF resolution changes between several commercially available glycan standards (which were also found in the Enbrel® N-glycan pool) as a function of the

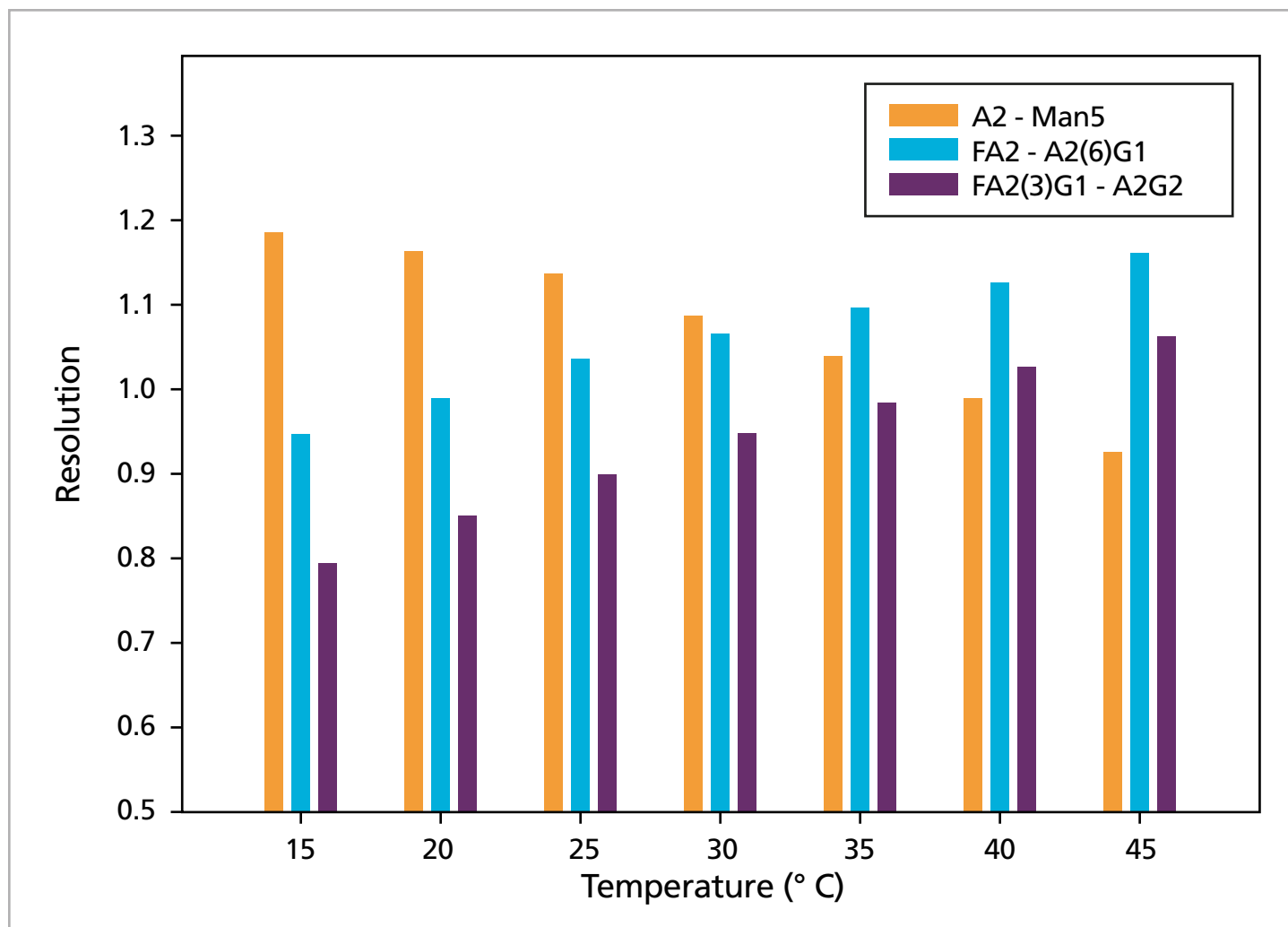


**Figure 1.** CE-LIF analysis of APTS labeled etanercept (Enbrel®) N-glycans in the temperature range of 15 - 45° C. The sample window is defined by the lower (DP2) and upper (DP15) bracketing standards. Conditions: 50 cm effective length (60 cm total), 50  $\mu\text{m}$  ID bare fused silica capillary, HR-NCHO separation matrix,  $E = 500 \text{ V/cm}$ , Injection: pre-injection of water for 5.0 sec at 5.0 psi was followed by 1.0 kV/1.0 sec sample injection and 1.0 kV/1.0 sec bracketing standard.

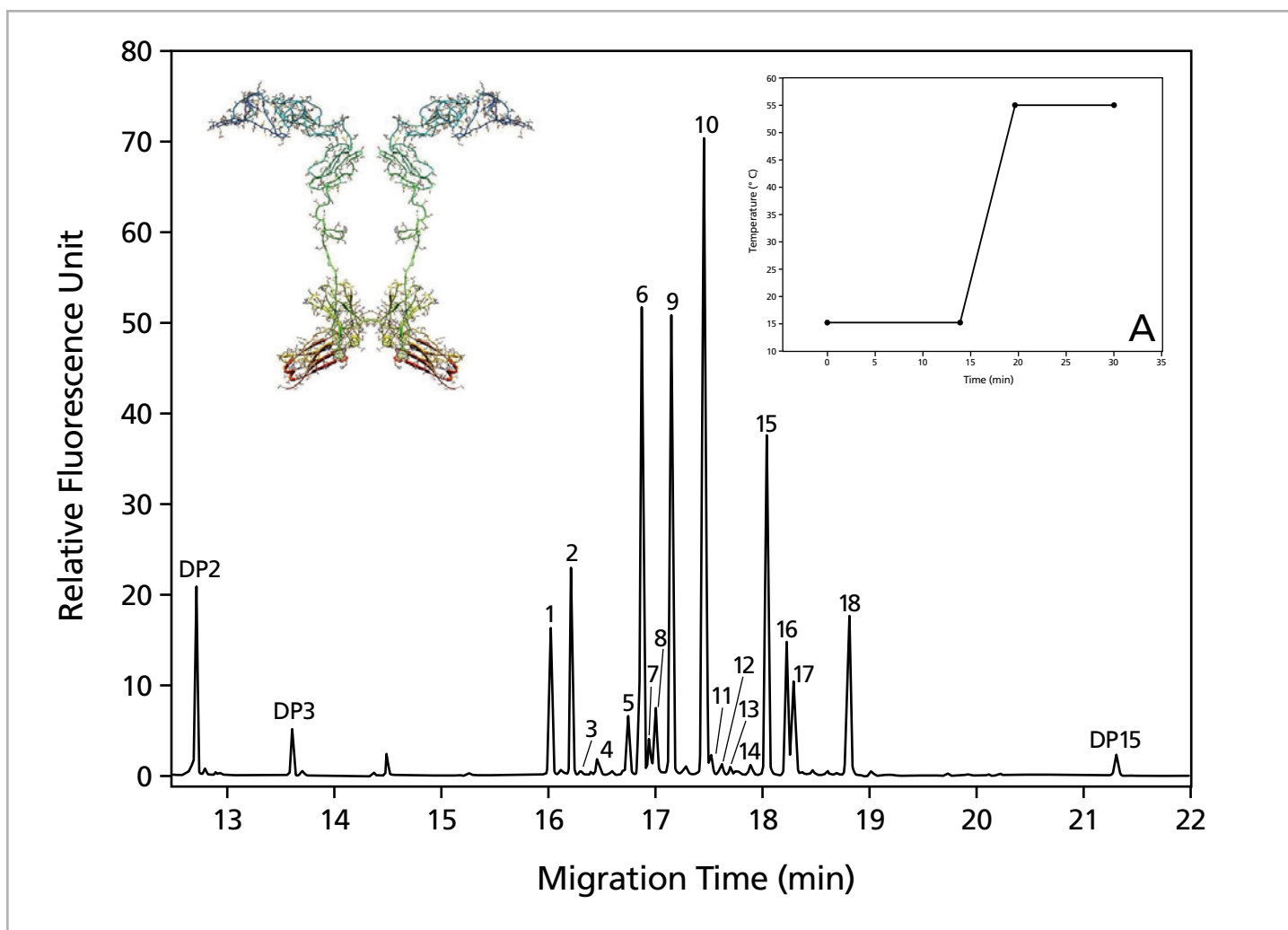
separation temperature. As one can observe with increasing separation temperature, the resolution between the FA2 and A2(6)G1, as well as the FA2(3)G1 and A2G2 peaks increased while the resolution between A2 and Man5 decreased.

The discovery of this phenomenon suggested that temperature could serve as a powerful separation parameter to fine-tune selectivities and the concomitant resolution between closely migrating carbohydrates in capillary electrophoresis. As a matter of fact, the recently introduced temperature gradient capillary electrophoresis approach proved to be an efficient way to rapidly determine the best separation temperature for the sample components of interest in hand.<sup>2</sup> Figure 3 shows a high-resolution separation of the etanercept (Enbrel®) N-glycans by applying a

temperature gradient from 15° C to 55° C during the automated capillary electrophoresis separation process. The upper left inset depicts the associated temperature profile. The separated glycan structures are listed in Table 1.



**Figure 2.** Capillary electrophoresis resolution value changes between the A2/Man5, FA2/A2(6)G1 and FA2(3)G1/A2G2 glycan standards in the temperature interval of 15° C to 45° C.



**Figure 3.** Separation of APTS labeled etanercept (Enbrel®) N-glycans by temperature gradient capillary electrophoresis. Separation conditions were the same as in Figure 1, except the temperature gradient profile that is shown in the inset.

Peak	Peak ID	Migration time (min)	GU Value	Area %
1	A2G2S2	16.05	5.11	3.30
2	FA2G2S2	16.24	5.43	4.04
3	A(6)2G1S1	16.34	5.60	5.74
4	FA(6)2G1S1	16.48	5.84	0.67
5	FA(3)2G1S1	16.78	6.37	1.92
6	A2G2S1	16.90	6.59	13.92
7	A2	16.97	6.72	1.45
8	M5	17.02	6.82	2.27
9	FA2G2S1	17.17	7.09	14.22

Peak	Peak ID	Migration time (min)	GU Value	Area %
10	FA2	17.48	7.67	22.95
11	M6	17.55	7.80	0.73
12	A3	17.64	7.97	0.48
13	A2(3)G1	17.72	8.13	0.31
14	FA3	17.91	8.49	0.40
15	FA2(6)G1	18.06	8.77	12.49
16	FA2(3)G1	18.25	9.11	5.17
17	A2G2	18.32	9.24	3.70
18	FA2G2	18.83	10.19	6.25

**Table 1:** Identified structures of etanercept (Enbrel®) glycans with the corresponding GU and Area % values.

## Conclusions

Understanding the phenomena of temperature dependent differential migration shifts of branched N-glycan subtypes in capillary electrophoresis allowed fine-tuning of the resolving power between carbohydrate structures of CQA importance. Closely migrating N-glycan structure pairs showed resolution maximums at different temperatures, suggesting the temperature gradient method as an easy and fast way to find out their optimal separation condition. In the case of etanercept (Enbrel®), the optimum temperature to separate the Mannose 5 oligosaccharide from the closely migrating biantennary non-galactosylated glycan (A2) was 15° C. CE analysis at this temperature provided the necessary information on the important aspect of serum half-life (CQA) expectation of this particular fusion protein therapeutics.

## Acknowledgements

The authors gratefully acknowledge the support of Development and Innovation Office (NKFIH) (K 116263) grants of the Hungarian Government.

## Reference

- 1 A. Guttman, M. Kerekgyarto, G. Jarvas: Effect of Separation Temperature on Structure Specific Glycan Migration in Capillary Electrophoresis, *Anal. Chem.* 87 (2015) 11630 – 11634.
- 2 M. Szigeti, A. Guttman: High-Resolution Glycan Analysis by Temperature Gradient Capillary Electrophoresis, *Anal. Chem.* 89 (2017) 2201–2204.
- 3 G. Jarvas, M. Szigeti, J. Chapman, A. Guttman: Triple-internal standard based glycan structural assignment method for capillary electrophoresis analysis of carbohydrates, *Anal. Chem.* 88 (2016) 11364–11367.

**Who is SCIEX?** SCIEX company's global leadership and world-class service and support in the capillary electrophoresis and liquid chromatography-mass spectrometry industry have made it a trusted partner to thousands of the scientists and lab analysts worldwide who are focused on basic research, drug discovery and development, food and environmental testing, forensics and clinical research.

**Contact Us: [sciex.com/contact-us](https://sciex.com/contact-us)**

For Research Use Only. Not for use in diagnostic procedures.

© 2018 AB SCIEX. SCIEX is part of AB SCIEX. The trademarks mentioned herein are the property of AB Sciex Pte. Ltd. or their respective owners. AB SCIEX™ is being used under license. Mention of trade names or commercial products in this publication is solely for the purpose of providing specific information and does not imply recommendation or endorsement by the USDA.

Publication number: RUO-MKT-02-6888-B 06/2018



### Headquarters

500 Old Connecticut Path, Framingham, MA 01701, USA  
Phone 508-383-7800  
[sciex.com](https://sciex.com)

### International Sales

For our office locations please call the division headquarters or refer to our website at  
[sciex.com/offices](https://sciex.com/offices)