



PA 800 Plus system

now compatible with the

Thermo Scientific™ Chromeleon™ Chromatography Data System

This software tool enables laboratories to control and manage the PA 800 Plus system using the Thermo Scientific Chromeleon Chromatography Data System (CDS).

This integration offers several benefits:

- Compatible with Chromeleon CDS versions 7.2.10 MUD and onwards, including all 7.3 versions.
- Supports CE assays that use photodiode array (PDA), ultraviolet (UV), and laser-induced fluorescence (LIF) detectors.
- Integrates CE assays within Chromeleon CDS, allowing a unified software solution for managing IC, LC, GC-MS(/MS), and CE assays.
- Helps reduce operating and maintenance costs by using a single software platform.
- Minimizes the training required for lab personnel by centralizing the management, acquisition, processing, and reporting of laboratory data.
- Transfer methods from 32 Karat software, or new methods can be developed using the guided instrument method wizard.
- Aggregating data across different assays allows for better correlation of data and trends, enhancing overall lab efficiency.
- Simplifies the operation and management of various types of assays using a common user interface.



This driver enables laboratories to streamline their workflows and optimize practices, making their operations more efficient and cost-effective.

Frequently asked questions

Q: What is required?

A: Chromeleon version: Chromeleon 7.2.10 MUD CDS onwards.

- Windows OS: Windows 10 or higher
- PA 800 Plus system firmware version 10.2.5-R

Q: Where/how do I get a copy of the driver?

A: The driver can be downloaded via the Thermo Fisher Scientific website.

Q: How much will it cost?

A: Contact your local Thermo Fisher Scientific sales representative and request a quote.

Q: Can I install it myself? Who should I contact for installation?

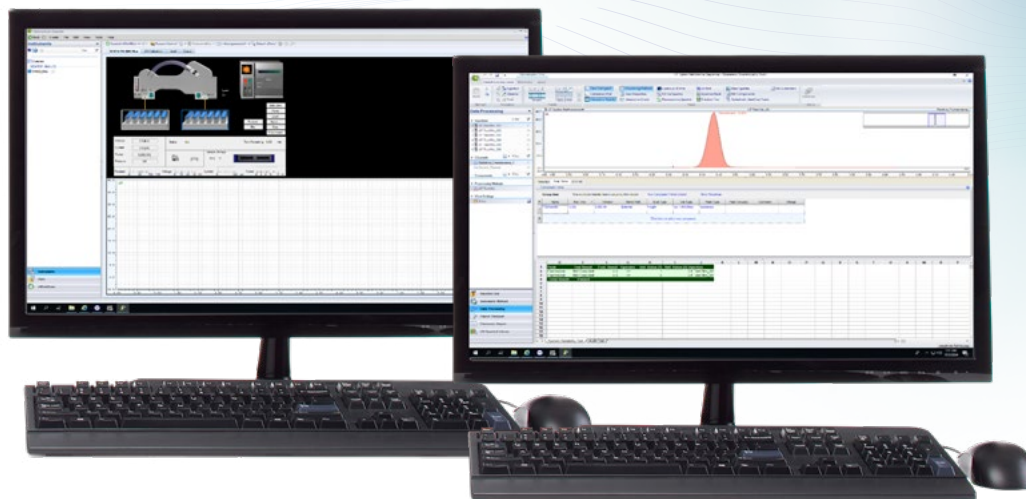
A: Detailed installation instructions will be available at release. For installation support, customers should contact their local Thermo Fisher Scientific sales representative and request a quote.

Q: What if I have issues with the driver? Who should I contact?

A: Contact the existing end established Thermo Scientific support channels. Each customer has a different agreement with Thermo Fisher Scientific which will drive the support channel.

- 1) For enterprise customers with a contract, contact Support.
- 2) For customers without an enterprise contract, contact IES

See details about the driver →



The SCIEX clinical diagnostic portfolio is For In Vitro Diagnostic Use. Rx Only. Product(s) not available in all countries. For information on availability, please contact your local sales representative or refer to <https://sciex.com/diagnostics>. All other products are For Research Use Only. Not for use in Diagnostic Procedures. Trademarks and/or registered trademarks mentioned herein, including associated logos, are the property of AB Sciex Pte. Ltd. or their respective owners in the United States and/or certain other countries.

© 2025 DH Tech. Dev. Pte. Ltd. MKT-32534-A

AB SCIEX™ is being used under license. Beckman Coulter® is being used under license.

Thermo Scientific™ Chromeleon™ Chromatography Data System is property of Thermo Fisher Scientific and its subsidiaries unless otherwise specified.