

# Expert brief: Solutions for cell culture medium analysis

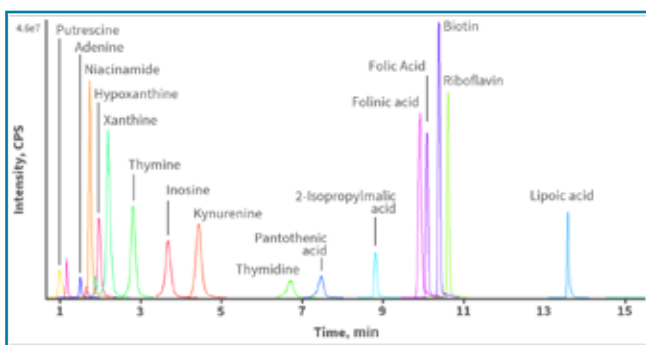
## Why is cell culture medium analysis so problematic?

- There are hundreds of different components in a cell culture medium. Multiple assays are generally required to cover all of the analytes in the cell culture.
- Cell culture components vary wildly in concentration.

See what you've been missing. Experience the SCIEX solution for comprehensive and accurate cell culture medium analysis.

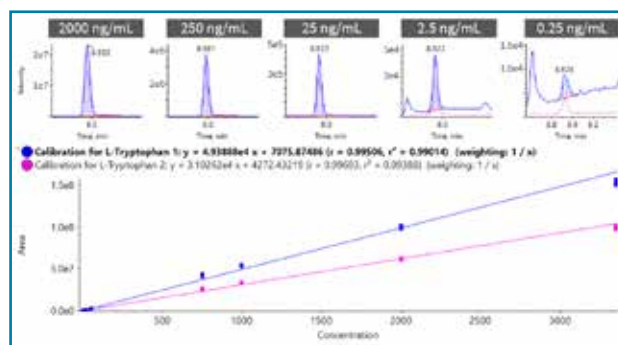
### Comprehensive coverage

Detect and quantify up to 111 compounds in a single injection.



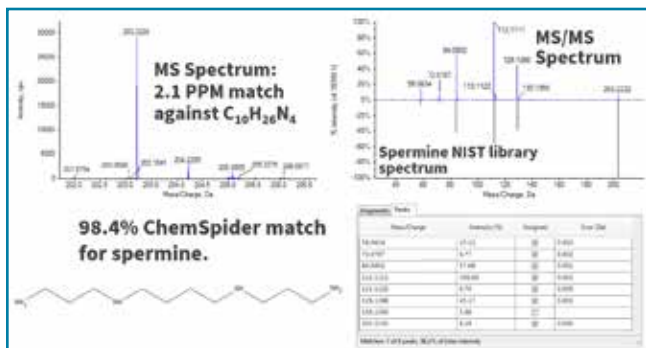
### Extreme sensitivity and linearity

Achieve pg/mL sensitivity and at least 4 orders of magnitude across the linear dynamic range (LDR) in a single injection.



### Quantification and qualification flexibility

- The linear ion trap on the QTRAP® 6500+ LC-MS/MS System enables isomer confirmation
- SWATH® Acquisition analysis on the TripleTOF® 6600+ LC-MS/MS System enables unbiased unknown detection and identification



### Bottom line

SCIEX cell culture medium analysis solutions enable both higher quality and higher yields in your biopharmaceutical production batches by providing complete clarity around the critical process parameters for your organic molecules.

For more information visit [info.sciex.com/cell-culture-medium-analysis](http://info.sciex.com/cell-culture-medium-analysis)