



Answers for Science.  
Knowledge for Life.™



It's Time to  
See the Future  
Differently



**SCIEX ExionLC™ Series**

# ExionLC™ Series

Complete, **reliable and expandable** solutions to get from sample-in to result-out.

Streamlined quality methods, industry-proven SCIEX OS and Analyst® Software, and leading edge LC-MS/MS technology



# LC Portfolio

## Options to Suit Your Needs

### Standard Flow

#### ExionLC™ AC

Reliable  
and Expandable

9,500 PSI



#### ExionLC™ AD

Full UHPLC Capability

18,000 PSI



### Low Flow

#### M5 MicroLC

Sensitivity and Throughput  
for Precious Samples

10,000 PSI



#### NanoLC 400

Flexibility  
for Low Flow LC/MS

10,000 PSI



#### CESI 8000 Plus

Extending the Reach of  
Your Mass Spectrometer

Ultra low-flow ESI <30nL/min



Answers for Science.  
Knowledge for Life.™

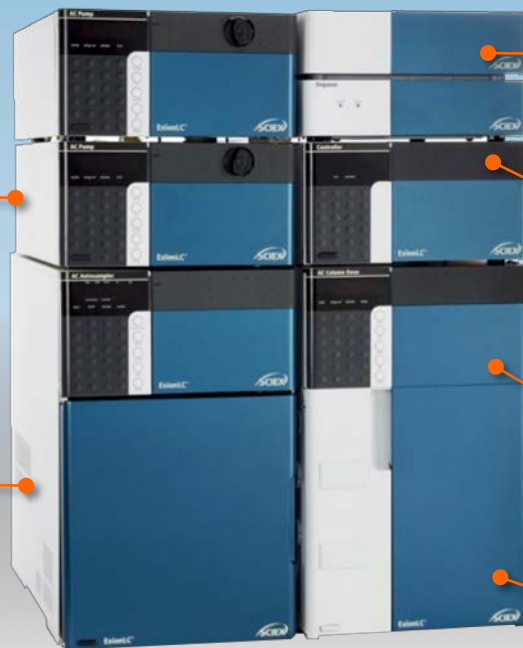


# ExionLC™ AC System

A complete, **reliable and expandable** solution to get from sample-in to result-out.

Modular pumping system delivers  
Up to 3 mL/min. at 9,500 PSI  
Up to 5 mL/min. at 6,000 PSI

Cooled autosampler with a  
sample capacity of 2 microtiter  
plates or 105 vials



Large capacity solvent tray  
easily holds up to 2-L bottles  
for uninterrupted analyses

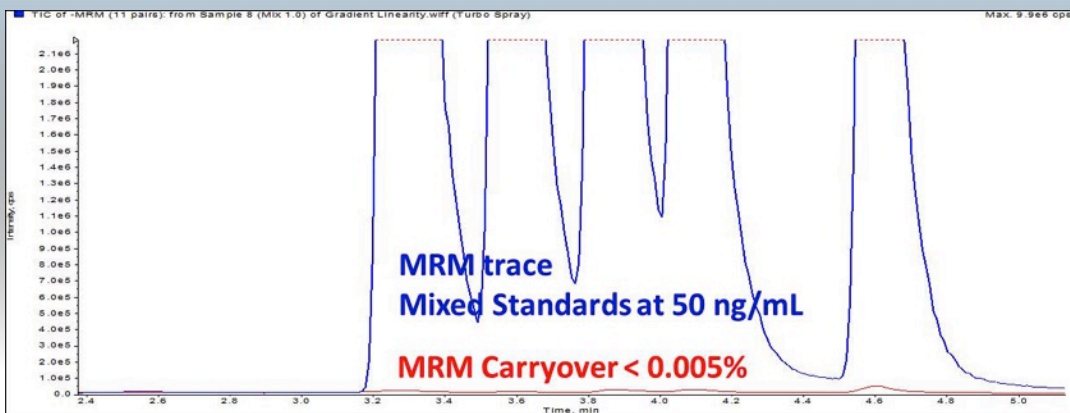
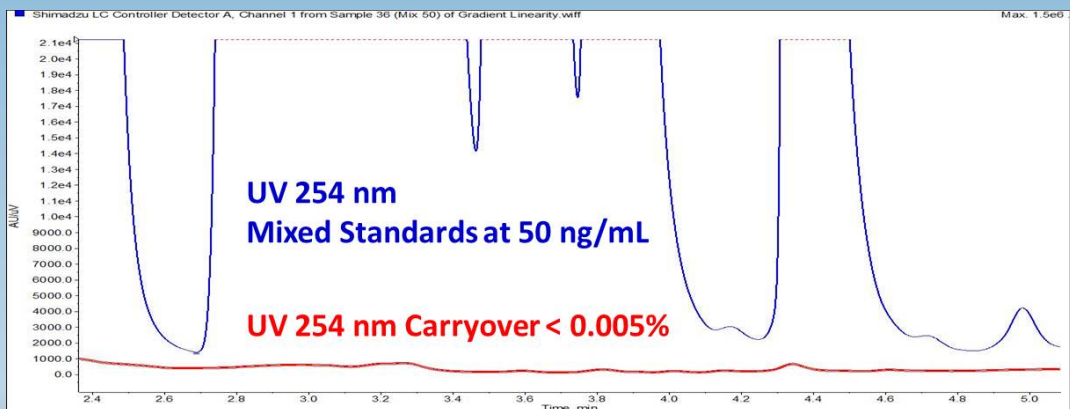
Built-in 5-channel degasser

Fan-forced air circulation  
oven maintains temperature  
from 10°C below ambient to  
85°C

Optional accessories include  
Rack Changer and Optical  
Detectors

# ExionLC™ AC System

A complete, **reliable and expandable** solution to get from sample-in to result-out.



Typical carryover, less than 0.005%

# ExionLC™ AD System

Excellent **expandability, robustness and carryover** performance.



Zero carryover with the power and flexibility of 3 different rinse solutions, plus a separate injection port rinsing solution

Injection cycle time as low as 14 seconds per sample

Cooled autosampler tray holds up to 2 microtiter plates or 105 vials



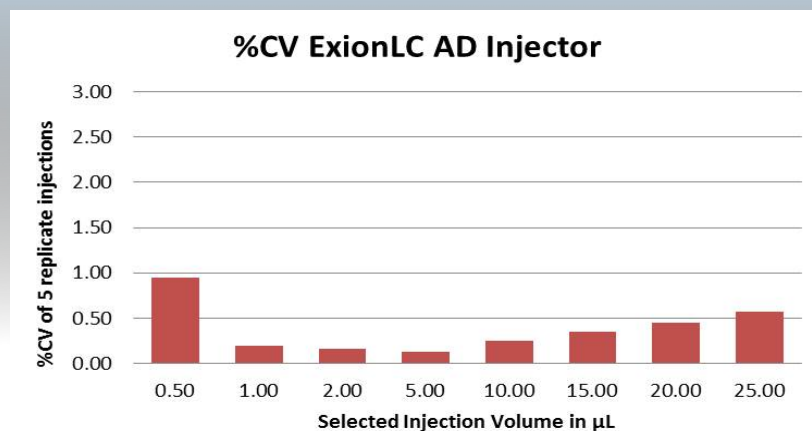
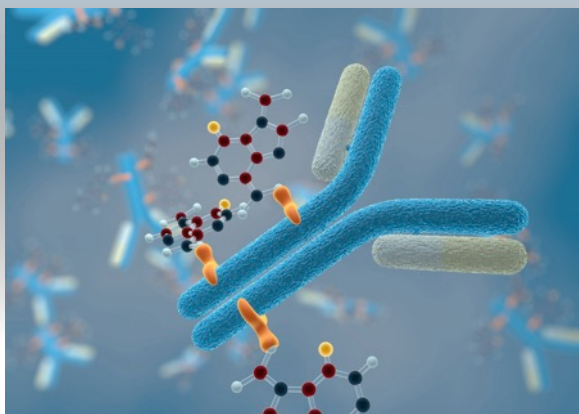
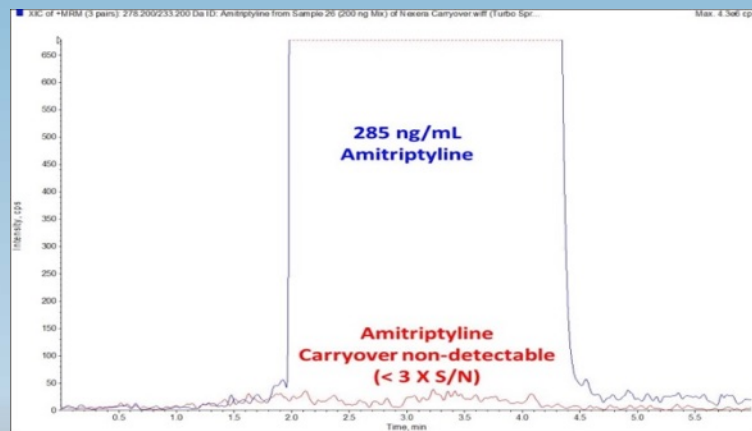
Pressures up to 18,000 psi  
Flow rates from 0.001 to 10.0 mL/min. Gradient accuracy better than  $\pm 0.5\%$

Heated block oven configuration allows for column temperatures up to 150°C

Optional accessories include 6 well plate autosampler, rack changer, and optical detectors

# ExionLC™ AD System

Takes on your most **challenging method development**  
**and sample analysis** applications.



# ExionLC™ Accessories

Using optional accessories, the system supports the most challenging method development and sample analysis applications through exemplary robustness and carryover performance.



# ExionLC™ Rack Changer

An optional rack changer for the ExionLC AC or AD autosampler allows the user to greatly **increase sample capacity** with either 12 deep-well or standard MTP.

Four stacks, each containing 3 plates, and each stack configurable to different plate types

Choice of 96-well microtiter plate, 96-well deep-well plate, or 384-well microtiter plate configurations



- 12 x 96 MTP capacity
- Regular or deep-well plates
  - 12 x 384 MTP
  - 648 x 1.5 mL vials
- Direct temperature cooling down to 4°C

# ExionLC™ AD Multiplate Autosampler

An upgrade from the ExionLC AD autosampler, the Multiplate Autosampler **expands the sample capacity** from 2 MTP or 105 vials to 6 MTP or 324 vials.

- Pressure rating 1,300 bar (18,000 psi)
- pH range 1-9 (standard)
- pH range 1-14 (optional)

Injection volumes from 0.1 to 50 µL



Zero carryover with the power and flexibility of 3 different rinse solutions, plus a separate injection port rinsing solution

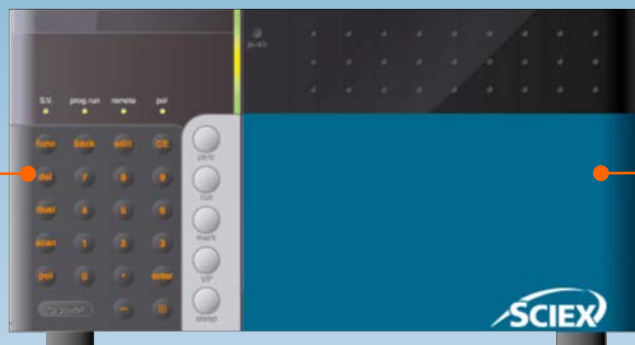
Injection cycle time as low as 14 seconds per sample

Cooled autosampler holds up to 6 microtiter plates or 324 vials

# ExionLC™ Optical Detectors

A UV-Vis detector with **low noise, high sensitivity and excellent dynamic range.**  
Full range of optional flow cells.

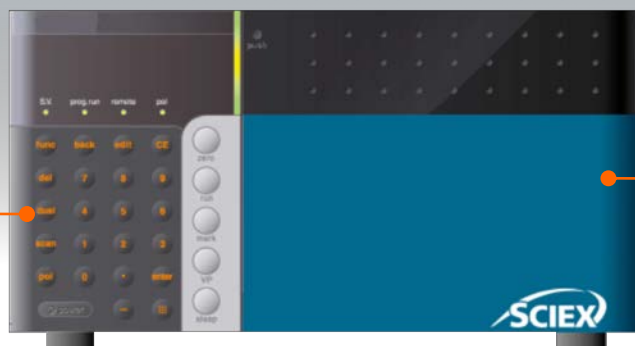
- 190-900 nm range
- Accuracy  $\pm 1$  nm
- Spectral bandwidth 8 nm
- Noise  $\pm 0.25 \times 10^{-5}$  AU Max
- Linearity up to 2.5 AU
- Cell pressure limit 120 bar



- Wavelength scanning option
- Semi-micro flow cell option
- Fast LC flow cell option
- Preparative LC flow cell option

A high performance PDA (photo diode array) **for demanding analytical applications.**  
Excellent choice for identification of both component and impurities.

- 10mm path, 1 $\mu$ L flow-cell
- Cell pressure limit 80 bar
- Linearity up to 2.0 AU



- 1024 element PDA
- 190-700 nm range
- Accuracy  $\pm 1$  nm
- Element resolution 0.5 nm
- Linearity up to 2.0 AU

# ExionLC™ Series

Complete, **reliable and expandable** solutions to get from sample-in to result-out.

Streamlined quality methods, industry-proven Analyst® Software, and leading edge LC-MS/MS technology







For Research Use Only.  
Not for use in diagnostic procedures.

AB Sciex is doing business as SCIEX.

© 2018 AB Sciex. The trademarks mentioned herein are the property of AB Sciex Pte. Ltd. or their respective owners. AB SCIEX™ is being used under license.

RUO-MKT-11-8882-A