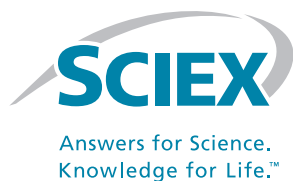
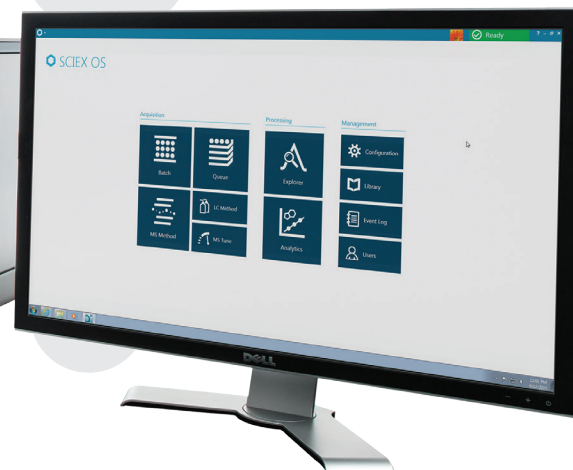


# Mass Spec Software, in Perfect Balance

The X500R QTOF System  
Powered by SCIEX OS



Productivity, accuracy, and simplicity—it's what the SCIEX OS is all about

# We knew what you were looking for in a mass spec system, and we delivered on all fronts, with extra focus on the software

What we heard from you made it possible for us to engineer a superior system with a software solution that meets your needs and then some. **Here are just some of the features built right in, and the benefits they deliver to you:**

## No-worry sample queues

The automated calibration feature seamlessly integrates mass calibration into your sample queues for rock-solid performance reliability.

### Acquisition



Batch



Queue



MS Method



LC Method



MS Tune

### Processing



Explorer



Analytics

### Management



Configuration



Library



Event Log



Users

## Everything you need all in one place

Acquire, analyze, report-run the mass spec and perform full data review and analytics all within the same software solution.

## Easy to learn and operate so you're more productive

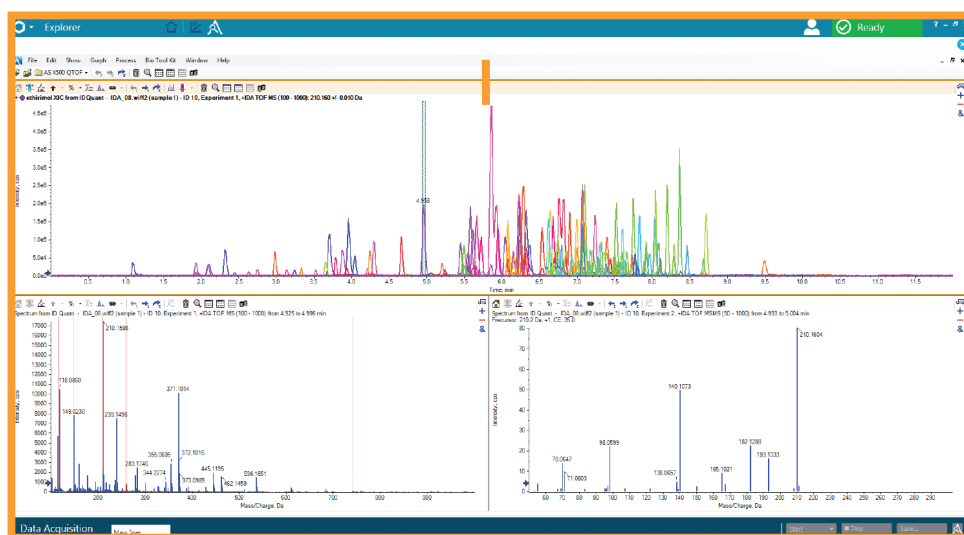
A new thoughtfully designed user interface ensures faster learning and improved productivity.

## Better system uptime with new tuning tools

New service diagnostic and tuning tools allow for easy troubleshooting, maximizing your uptime.

## Process large compound lists—better, faster

Do it all better and faster with MRM and calibration displays, automated MS/MS library search and interpretation, and structural elucidation tools for unknowns.



## Simple quant with confirmation for all your methods

Powerful new tools designed to deliver enhanced quantitative results from high-resolution MS data with included MS/MS library confirmation capabilities.



## Get to Know SCIEX OS

Learn the interface and see the tools designed for routine quant/qual workflows.

See how to create methods, build sample queues, and process data.

Get to know SCIEX OS: [sciex.com/OS](http://sciex.com/OS)

# Your Success is Our Success

## We take it personally

As a SCIEEX customer you have access to a world-class customer support organization. Wherever you are, we're there with you as a trusted partner to answer questions, provide solutions, and maximize lab productivity.

Our customer support organization has access to the latest product updates, software revisions, methods and repair procedures to make sure that you stay on top of your game.

When you have questions, we have answers.

Learn more at [www.sciex.com/customersupport](http://www.sciex.com/customersupport), or locate your local account representative at [www.sciex.com/contactus](http://www.sciex.com/contactus)

# Answers for Science.

# Knowledge for Life.™

AB Sciex is doing business as SCIEEX.

© 2015 AB Sciex. For Research Use Only. Not for use in diagnostic procedures. The trademarks mentioned herein are the property of AB Sciex Pte. Ltd. or their respective owners. AB SCIEEX™ is being used under license.

RUO-MKT-03-2844-A 10/2015

---

#### Headquarters

500 Old Connecticut Path  
Framingham, MA 01701 USA  
Phone 508-383-7700  
[www.sciex.com](http://www.sciex.com)

#### International Sales

For our office locations please call the division headquarters or refer to our website at [www.sciex.com/offices](http://www.sciex.com/offices)

